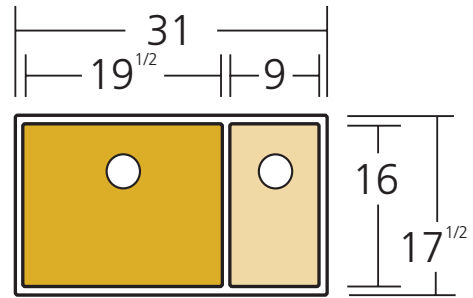


Oliveri®

Model: SB35GM



FEATURES

- Versatile Installation**
 Suitable for topmount, undermount or flushmount installation.
- Softtone® and sound proofing**
 Ensures improved heat retention with a sound deadening finish.
- Easy clean corners**
 Softly squared 5mm radius corners are hygienic and easy to clean.
- Stainless steel basin protectors**
 The matching basin protector creates a barrier between dishes and the unique bowl finish.
- Rear Waste Outlets**
 Colored to match your sink the outlets allow maximum space in the cupboards below.

INCLUDED ACCESSORIES



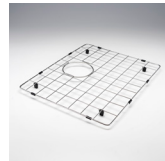
ACBWGM Gunmetal
Basket waste



ACBWGM Gunmetal
Basket waste



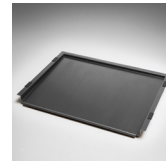
ACP104F
Bamboo board



ACBPGM-1 Gunmetal
Basin protector



ACBPGM-3 Gunmetal
Basin protector

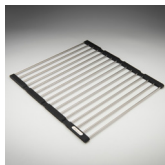


ACP109GM Gunmetal
Bench top drainer tray

MATCHING ACCESSORIES



ACP136
Colander



ACP105
Foldamate

SPECIFICATIONS

Description

Spectra 1 & 1/2 Basin Gunmetal Sink

Sink Size

31"W x 17^{1/2}"H

Large Basin

19^{1/2}"W x 16"H x 8"D / 10.5 Gallons

1/2 Basin

9"W x 16" x 8"D / 4.7 Gallons

Construction

Fabricated with 5mm radius corners, Softtone® and soundproofing

Material

304 grade, 18/10 coloured stainless steel (18 gauge)

Installation

Topmount, undermount or flushmount

Fixings

Adjustable clips and sealing foam supplied

Cut out template

Refer to oliverisinks.com

Min cabinet size

36"

Tap holes

N/A

Waste fittings

2 x basket wastes included

Overflow

N/A

Carton size

34" x 21" x 13"

Weight

41lbs

Warranty

Lifetime manufacturer's warranty (refer to oliverisinks.com)



For more information visit oliverisinks.com